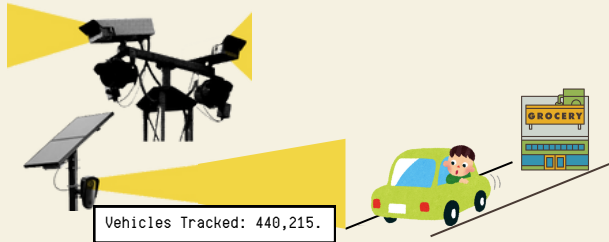


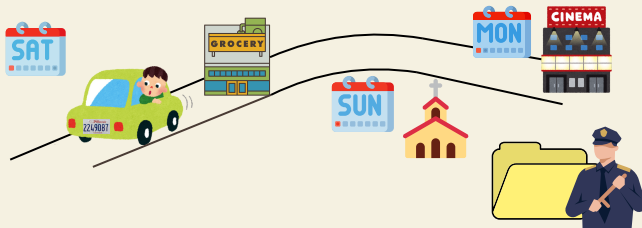
# How am I tracked by ALPRs?

One day, You drive to Costco in Champaign . . .



As you head to the marketplace, dozens of ALPRs track your car and every place you go. Every movement. Every direction. In 30 days, over 440,000 vehicles recorded. That's four times more than Champaign's population, 89,189. And now, your data is part of it.

## Who's Tracking Your Car Behind ALPRs?



ALPRs enable over 40 police departments to access, review, and share your vehicle data, regardless of any wrongdoing. With your historical daily data, they can identify your patterns, habits, and movements across the city-or even predict what you might do next-before the data is deleted. Unlike other ways of collecting data, CPD does not need your permission to collect ALPR data.



See the list of who can access your data!

# What can I do about surveillance in my community?

## Get Involved & Stay Informed:

- Pay attention to the conversations happening in your community.
- Talk to your friends, teachers, and parents.
- Encourage others to be aware; pass on this guide!
- Pay attention to the news from privacy organizations EFF or ACLU.

## Know Your Rights:

- Understand the privacy laws in your area.

## Educate Yourself:

- Read and learn about how these technologies work and are used.

## Adjust Your Privacy Settings:

- Manage your settings on location-sharing apps that track users and read the privacy & terms agreements of the websites you visit.

## Know Your surroundings:

- Being aware of your surroundings can allow you find or spot the different types of surveillance technology that is around you.

## Take Control of Your Privacy

Being aware of the surveillance technology around you and how it works is the first step to protecting your own privacy. By staying informed, you can make smarter choices about where you go, what you share, and how you protect your personal data.

Remember, it's your data, and you have the right to be mindful of who's watching!



University of Illinois Urbana-Champaign  
**Community Data Clinic**  
School of Information Sciences



# Your Data, Your Life:

An Educational Guide:  
How ALPRs Track You



## AUTHORS:

Madisen LeShoure, Jui-Fang (Winni) Hsu, Evan Allgood,  
Julian Chin, Anita Say Chan

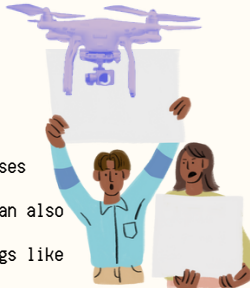
## What is surveillance?



Surveillance is the act of systematically monitoring people, places, or activities, usually for the purpose of gathering information. This can happen in the real world (like police cameras watching public spaces) or online companies (like online vendors who track what you click on).

## Why Does this Matter to Me and MY Community?

Surveillance can be used for safety purposes (like catching people speeding), but it can also be used by authorities/companies for things like tracking where you go and what you do in ways that can question your basic rights & freedom.



## Surveillance Technologies in Champaign, IL

- **Automatic License Plate Reader (ALPR):** A system of cameras that captures, scans, records, and stores license plates data from passing vehicles in a given area to track vehicles' locations over time.<sup>[1]</sup>
- **Speed, Traffic, & Store (CCTV) Cameras:** Video surveillance system<sup>[11]</sup> that uses closed-circuit television cameras to monitor specific places to prevent theft.<sup>[11]</sup>
- **Gunshot Detectors (ShotSpotter):** Systems using sensitive microphones and sensors that detect, record, and locate the sound of gun fire to alert law enforcement.<sup>[11]</sup>
- **Drones:** Unmanned aerial systems (UASs) used in crime investigations, search and rescue operations to locate stolen goods, missing persons, and surveying land.

## What does personal data look like?



- **Your Facial Information:** Cameras with facial recognition technology can map your face to identify you in crowds or link your identity to activities.
- **Your Whereabouts and Movements:** Cameras track where you've been, at what times, and can use this information to build a pattern of your activities.
- **Your Vehicle Data:** ALPRs scan and share your car's license plate number with others, recording where and when you were spotted.

## Questions You may have about ALPRs in Champaign

### How do ALPRs work?

- ALPRs use high-speed cameras that can take up to 1000 photos per minute of license plates on passing vehicles.<sup>[8]</sup>

### Where does MY data go?

- License plate photos are stored in a database that can be shared with 5,000+ police departments, communities, national associations around the United States.

### How does MY data get used?

- Your data is used to track stolen vehicles,<sup>[5]</sup> look for suspects, and monitor traffic patterns. Your data can also be used as evidence in criminal investigations.

### How did Champaign get ALPRs?

- Different types of surveillance technology / ALPRs were advertised to the Champaign Police Department by the company Flock Inc. CPD requested a budget through the city council. Unlike in Urbana, no town halls were hosted; instead, the city council approved the budget.<sup>[21] [22]</sup>



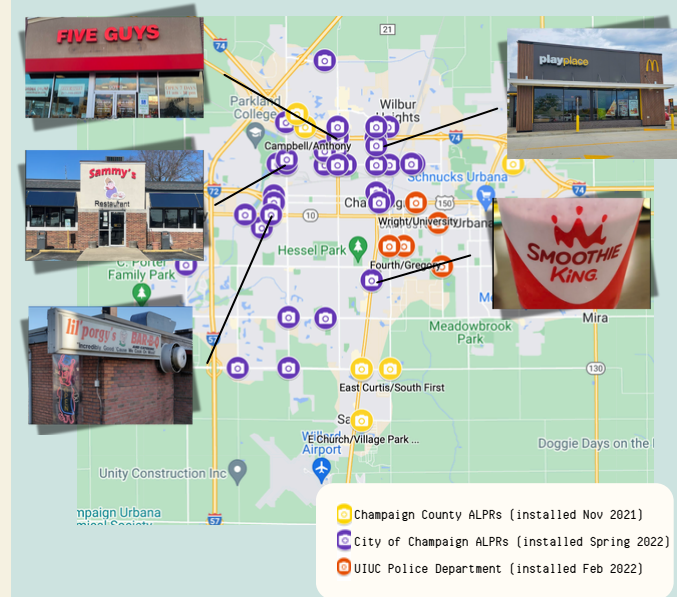
\*Your data can be retained for days, months, or even years, depending on local policies.

## Where are ALPRs in Champaign?

As of November 2023, there are 46 ALPR units spread across the city of Champaign.

These cameras can connect with other cameras owned by different police departments, creating a nation-wide network to monitor movement. You might find these cameras at city entrances, around popular spots like restaurants and churches, or even near hospitals. And soon, there could be up to 66.

## Map of 46 ALPR Cameras in Champaign



Data source: Champaign County Sheriff's Office. (2023). [ALPRs' Current Location].<sup>[1]</sup> Unpublished data obtained via FOIA request #PDF010-2023-1871 on October 20, 2023.



See more details of this map on Google Map